

# thomas

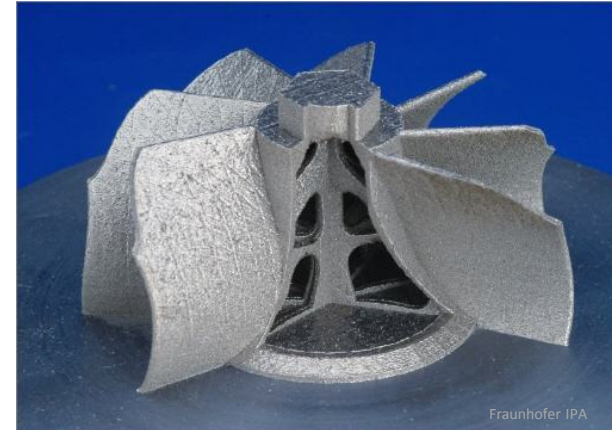
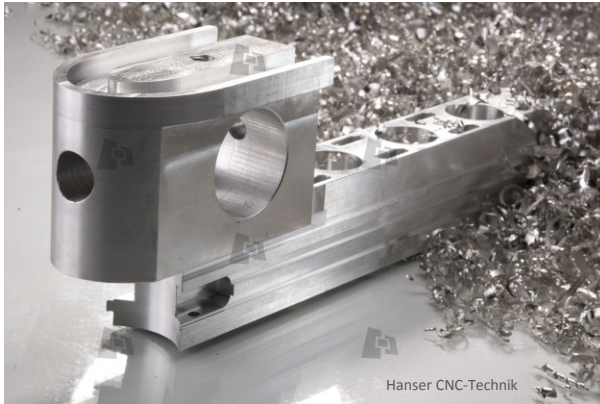
Technik + Innovation



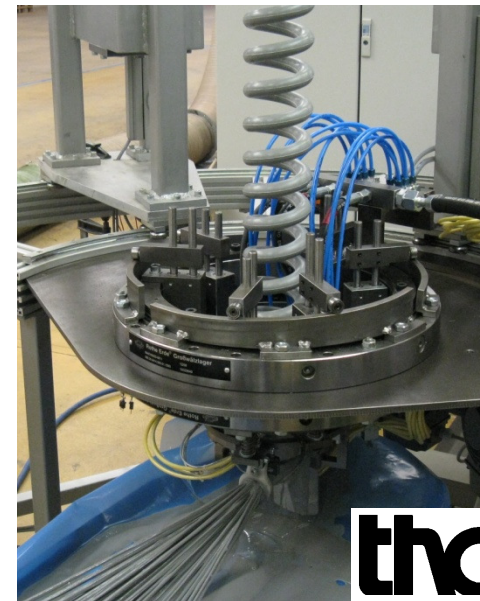
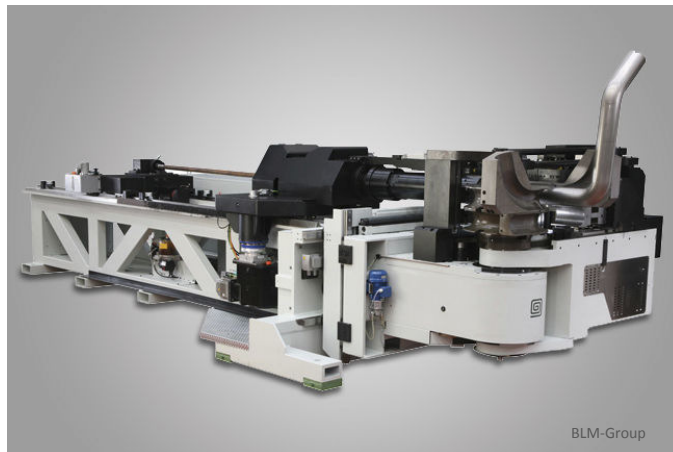
WESTFALIA   
Van Conversion

lattoflex<sup>®</sup>

**Rohstoffeffizienz bedeutet:  
Von subtraktiver zu additiver Produktion**

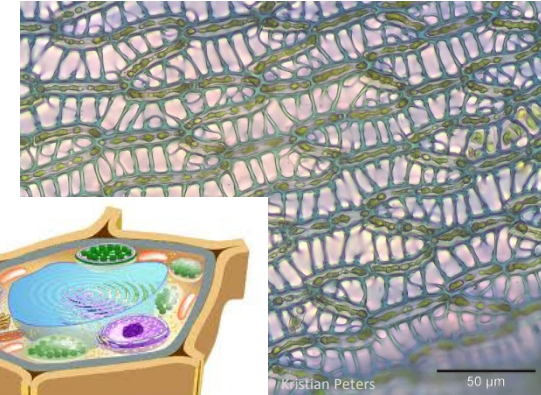
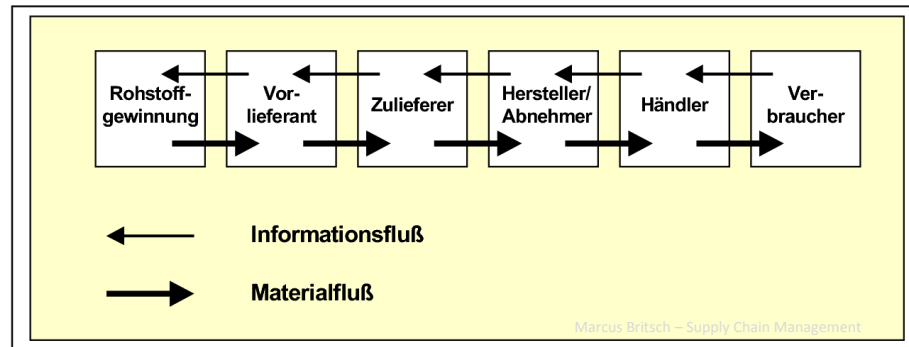


**von Verformung zur Urformung**



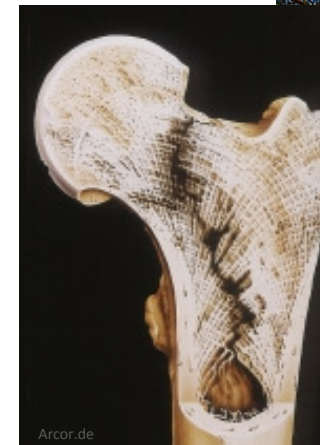
**thomas**  
Technik + Innovation

# Rohstoffeffizienz bedeutet: Von sequentieller zu paralleler Produktion



Universität  
Düsseldorf

# von Isotropie zur Anisotropie



**thomas**  
Technik + Innovation